

# **The Idea of the Camera**

## **The Camera Obscura and the Journey to Photography**

Bill Barrett  
Webster University  
St. Louis

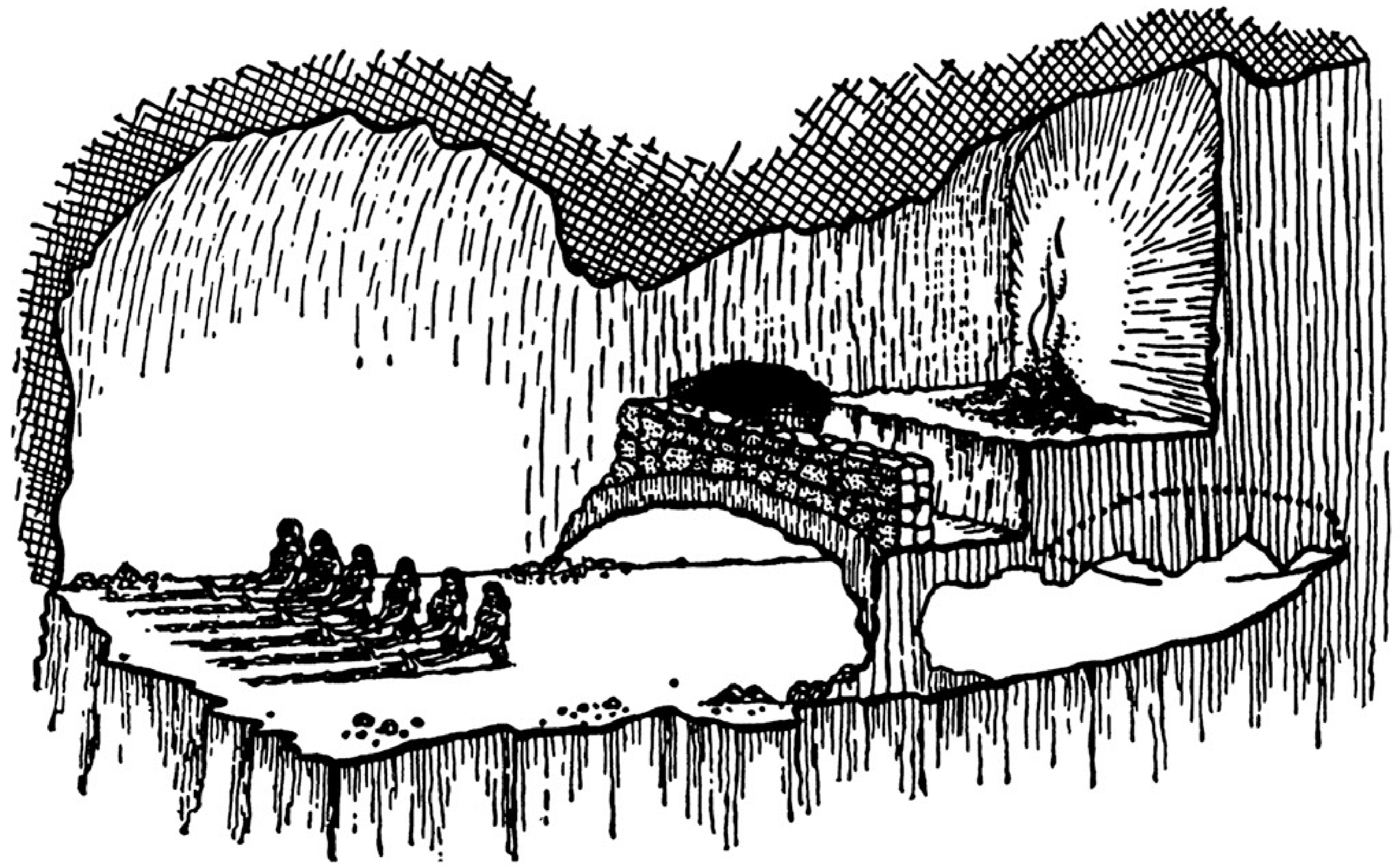


## The Book of Master Mo Canons and Explanations

B19

C: The image (shadow) being inverted depends on there being an aperture at the cross-over and the image (shadow) being distant. The explanation lies in the aperture.

E: The image (shadow): The light reaches the person shining like an arrow. The lowest [light] that reaches the person is the highest [in the image] and the highest [light] that reaches the person is the lowest [in the image]. The feet conceal the lowest light and therefore become the image (shadow) at the top. The head conceals the highest light and therefore becomes the image (shadow) at the bottom. This is because either far or near there is an aperture with light in it, therefore the image (shadow) turns around within it.







# كتاب المناظر

للحسَن بن الهَيْثَم

المقالات: ١-٢-٣

في الإبصار على الاستقامة

مفهرها وراجعها على الترجمة اللاتينية

عبد الحميد صبرة

الكويت ١٩٨٢م

السلسلة التراثية

(٤)

OPTICAE  
THESAURVS  
ALHAZENI  
ARABIS  
libri septem, nunc primùm  
editi.

*EIVSDEM libri DE CREPUSCULIS  
& Nebulis aëreis.*

ITEM  
VITELLONIS  
THVRINGOPOLONI  
LIBRI X.

*Omnes illustrati figuris illustrati & aucti, adiectis etiam in  
Alhazeni commentarijs,*

A  
FEDERICO RISNERO.

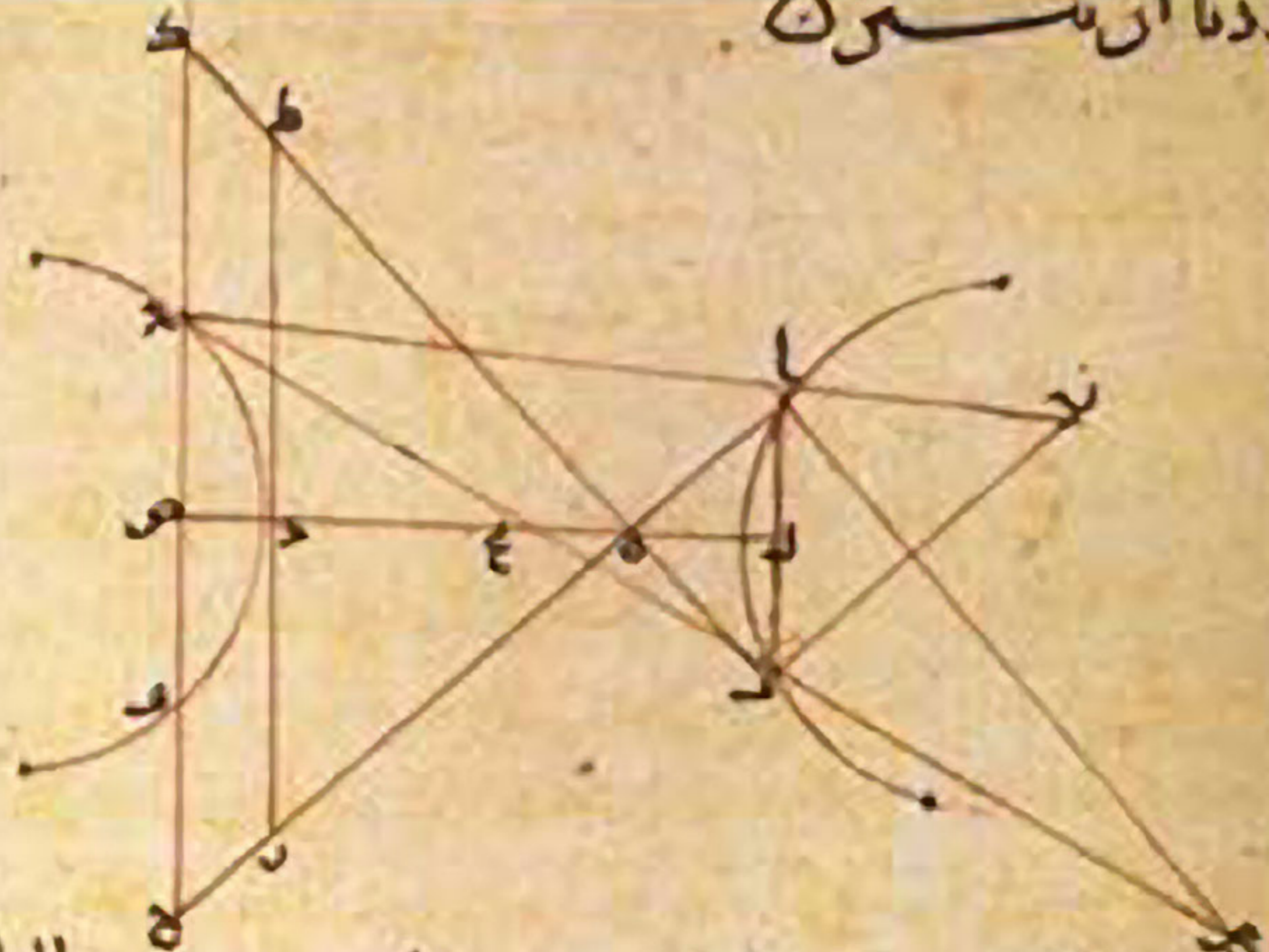


*W. B. 1711*

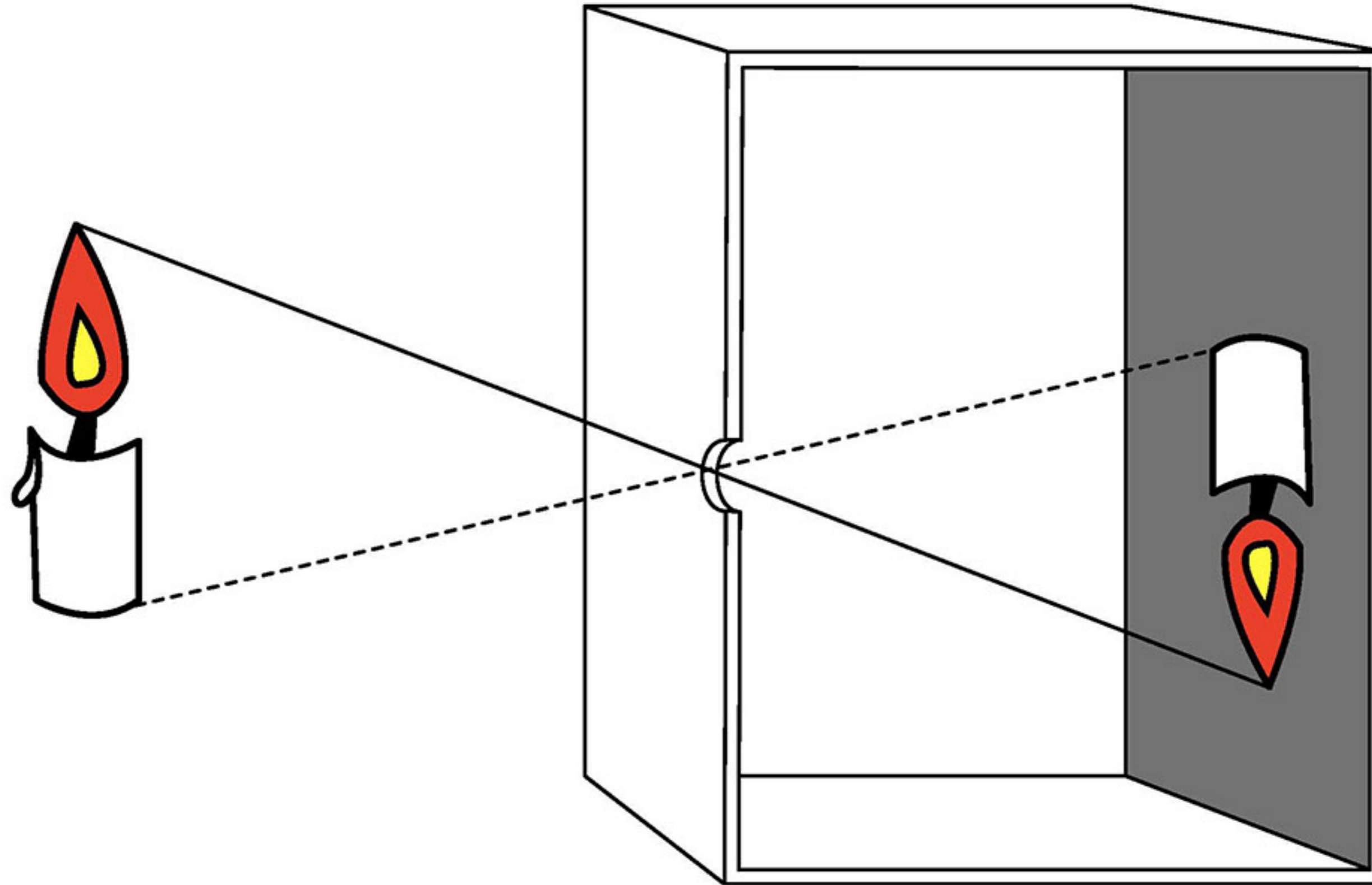
*Com privilegio Cæsaris et Regis Gallie ad imprimendum*

BASILEAE,  
PER EPISCOPIOS, M D LXXII.

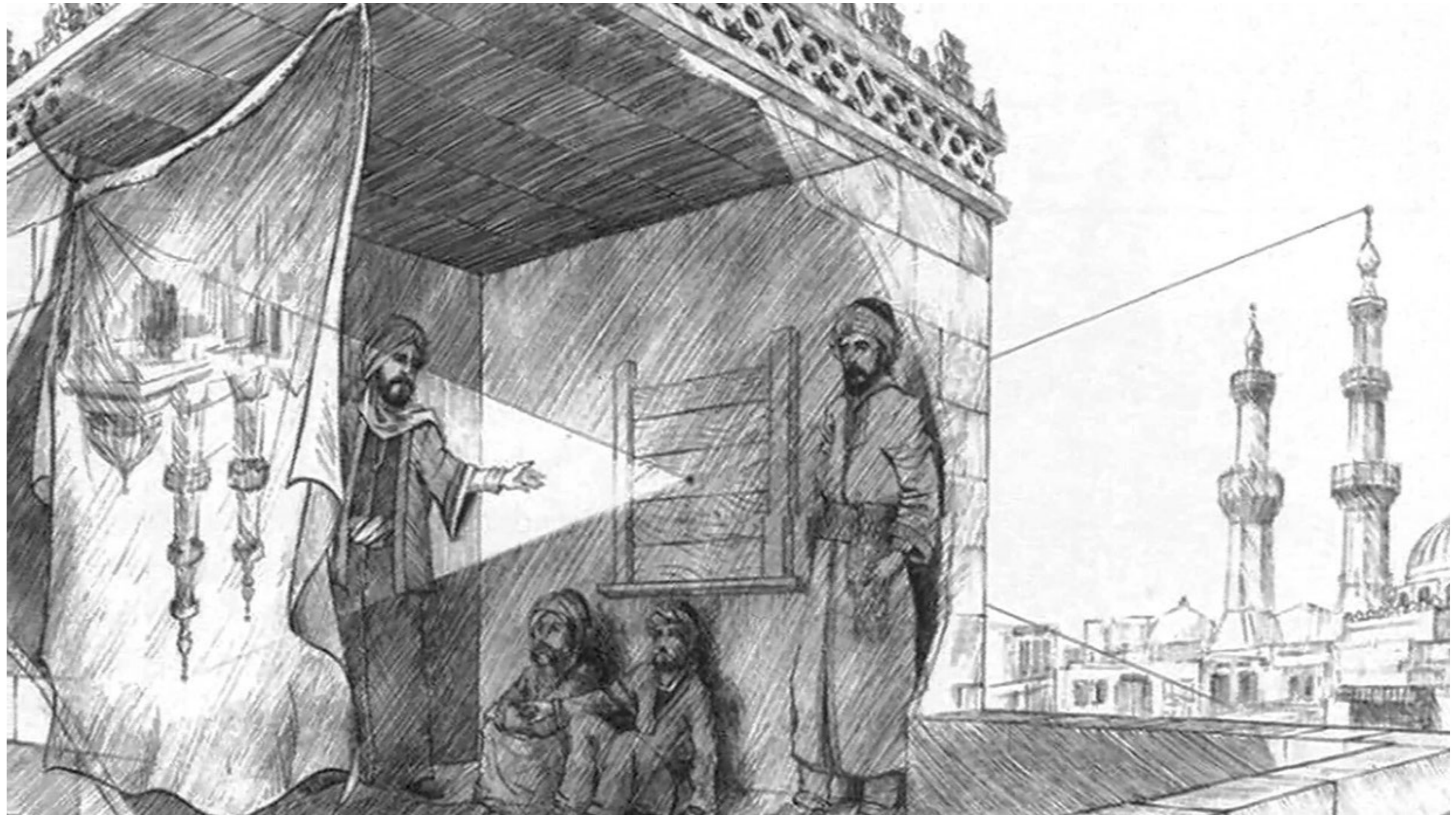
اردنا ان يكون



من أعماله السالفة من كتاب اباوسون في المبروطات والمد الله رب العلمين











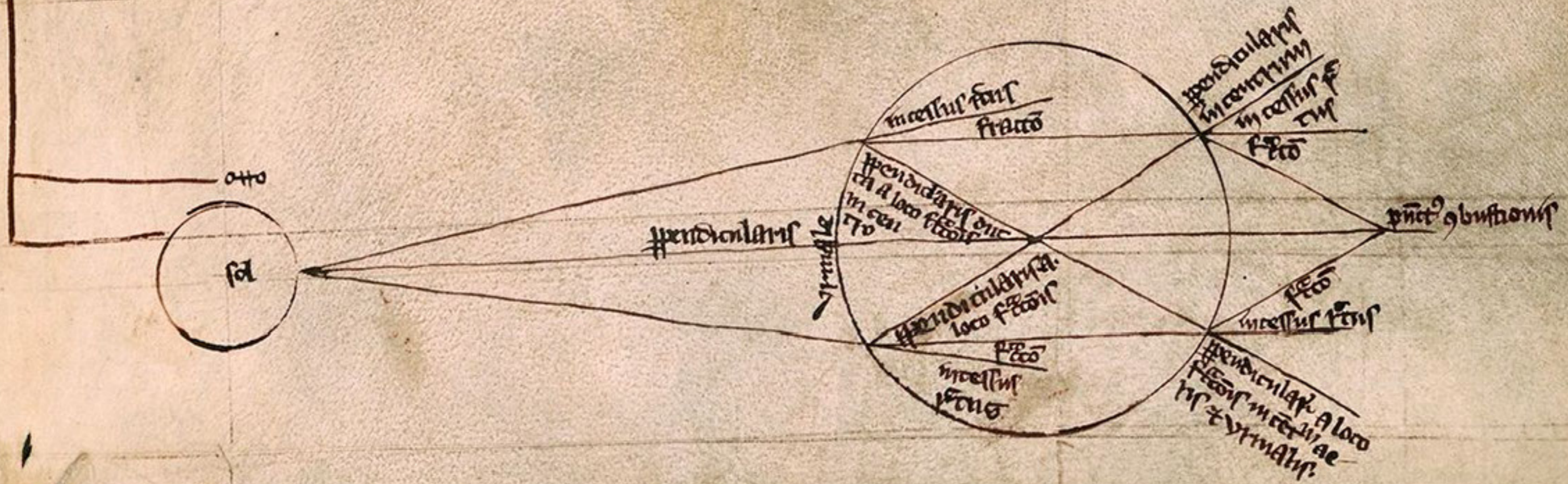
Intentio nra est in hac tractatu  
 descripte figuram machine munda  
 ne: sicut i figuris eam ostenden  
 tum: i motus corp: superior: i fi  
 guras suoz arcuoz. **S**icut igit  
 hi machina specia est. dicens est  
 in primis quid sit sem. **E**st aut  
 sem multicus semicirculi diamet  
 eius fixa. donec ad locum suum vnde incepit  
 redat. **S**i igitur semicirculi. a b c. sup vol  
 uatur sup. a b. diametri fixam. **O**mnifert  
 est q motu suo describit corpus. a cui medio  
 s. o. omnes linee sunt eqles. **E**t erit corp  
 illud cuiusmodi dicimus ee specum. tale aut  
 corpus e tota mundi machina. **V**mague  
 mur tñ sup. o. centri. d. e. semicirculi  
 describi. omnifert est igit q sup fixat nre  
 a b c. semicirculi. i. d. f. e. circumferentia **sem.**  
**S**i circulo uat sup. a b. diametrum.  
 motu suo describit corpus cui ultima sup  
 fixat. i. ultima erunt specia: i corp illud  
 totum nre. i. etiam specum. nichil hñs  
 ee se. omnia alia corpa conti  
 uens intra se. **O**mnifert si  
 gure i situ. corp huius  
 mundi e unum q qu  
 tam certam uolant  
 phi **S**ine ethem. su a d g h u corp r e p i e b



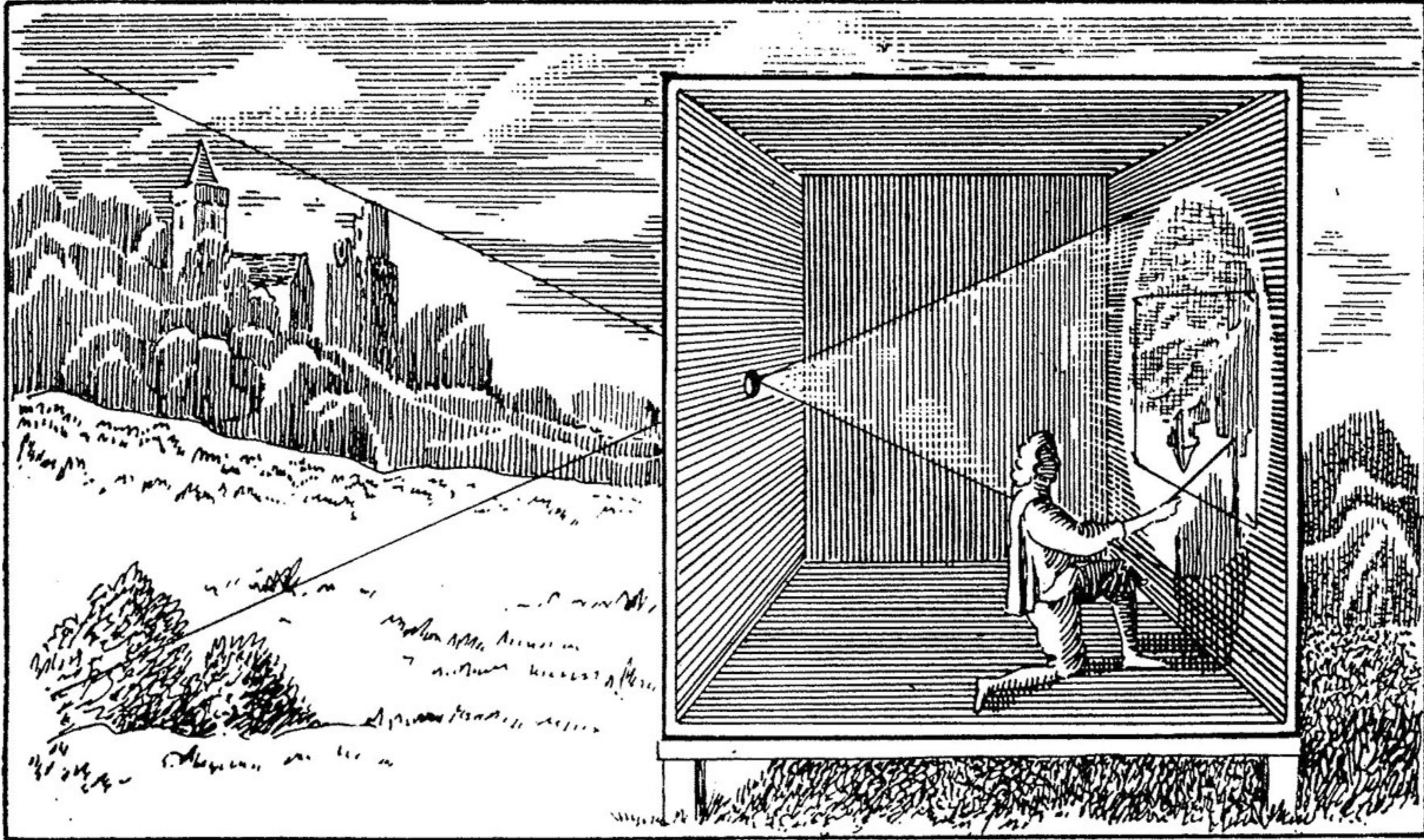
MUSEUM  
BRITAN  
MION



uo appenctū distan' a. Aequali polo erit minor cū fuit i meridionali. linea  
 uisus quodē. Cū u. fuit i linea iudic' in loco d. est p'p'ior p'cto. d. est  
 sup' cap' n'ri. Sic i q' loco d. uisus eadistans eadistans maior i p'ori q'  
 loco minor. q' actus p' p'one radu q' fit i superficie q' d'eat i n' aet'



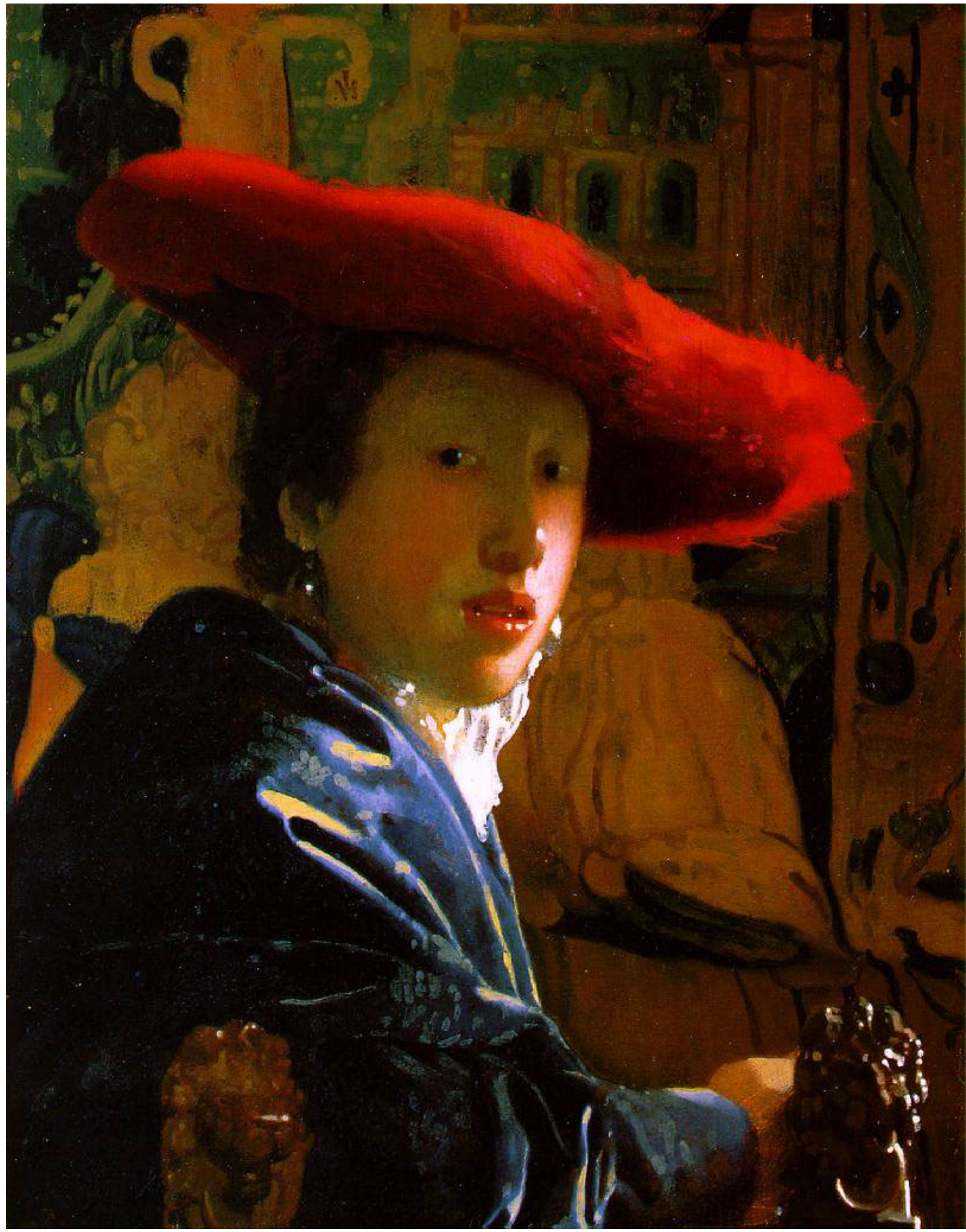


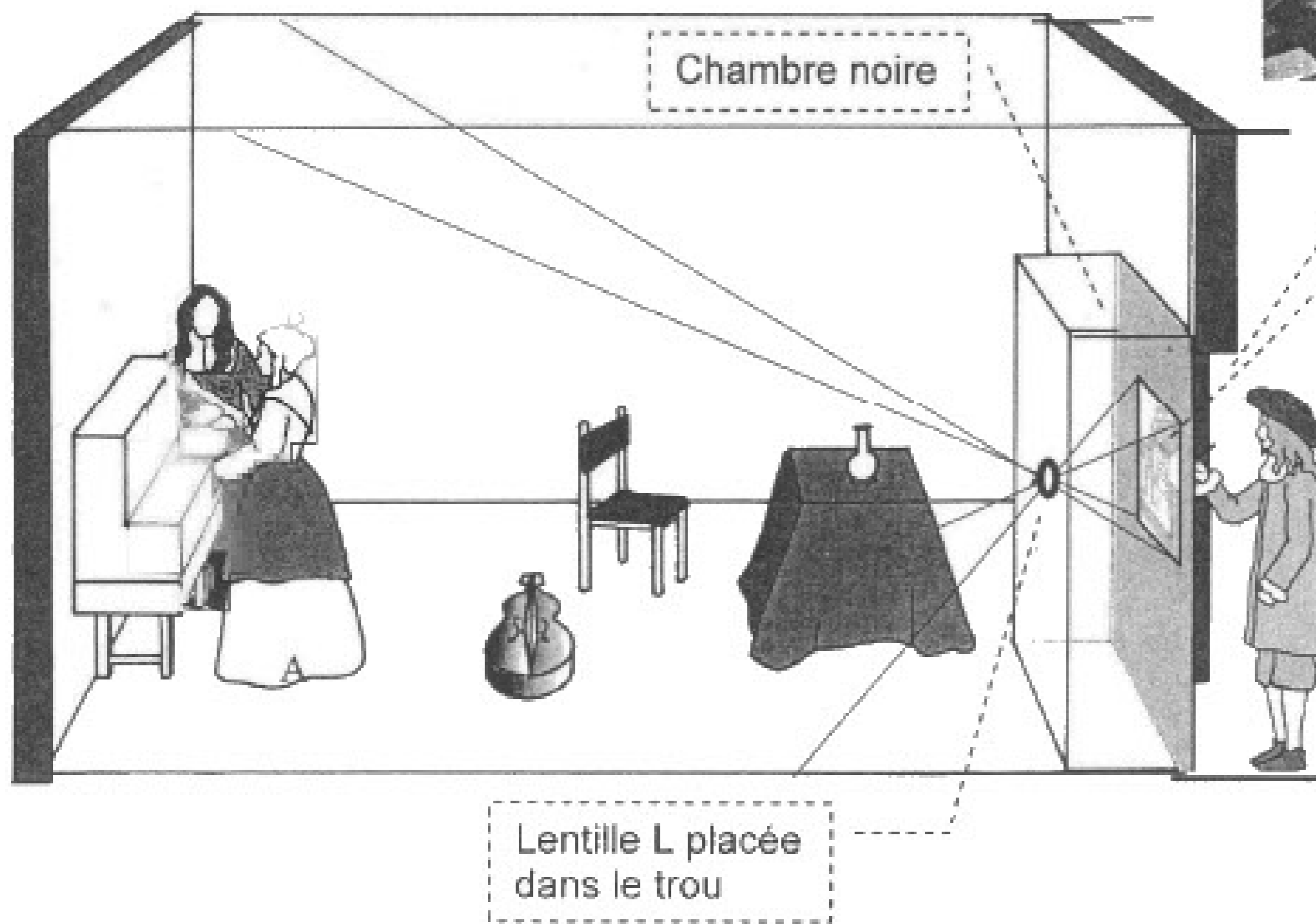








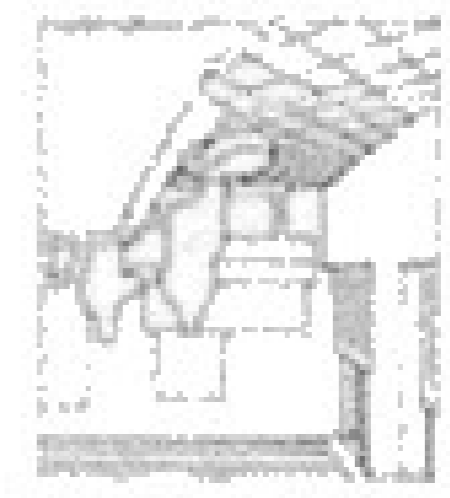




Leçon de musique

porte

Verre poli placé sur une ouverture à l'arrière de la chambre noire : le peintre peut y dessiner une esquisse







19

27 - 27. 27. 109



Chambre de  
M. de la Roche  
pour les papiers  
de la bibliothèque  
de la Roche de la Roche  
de la Roche de la Roche

